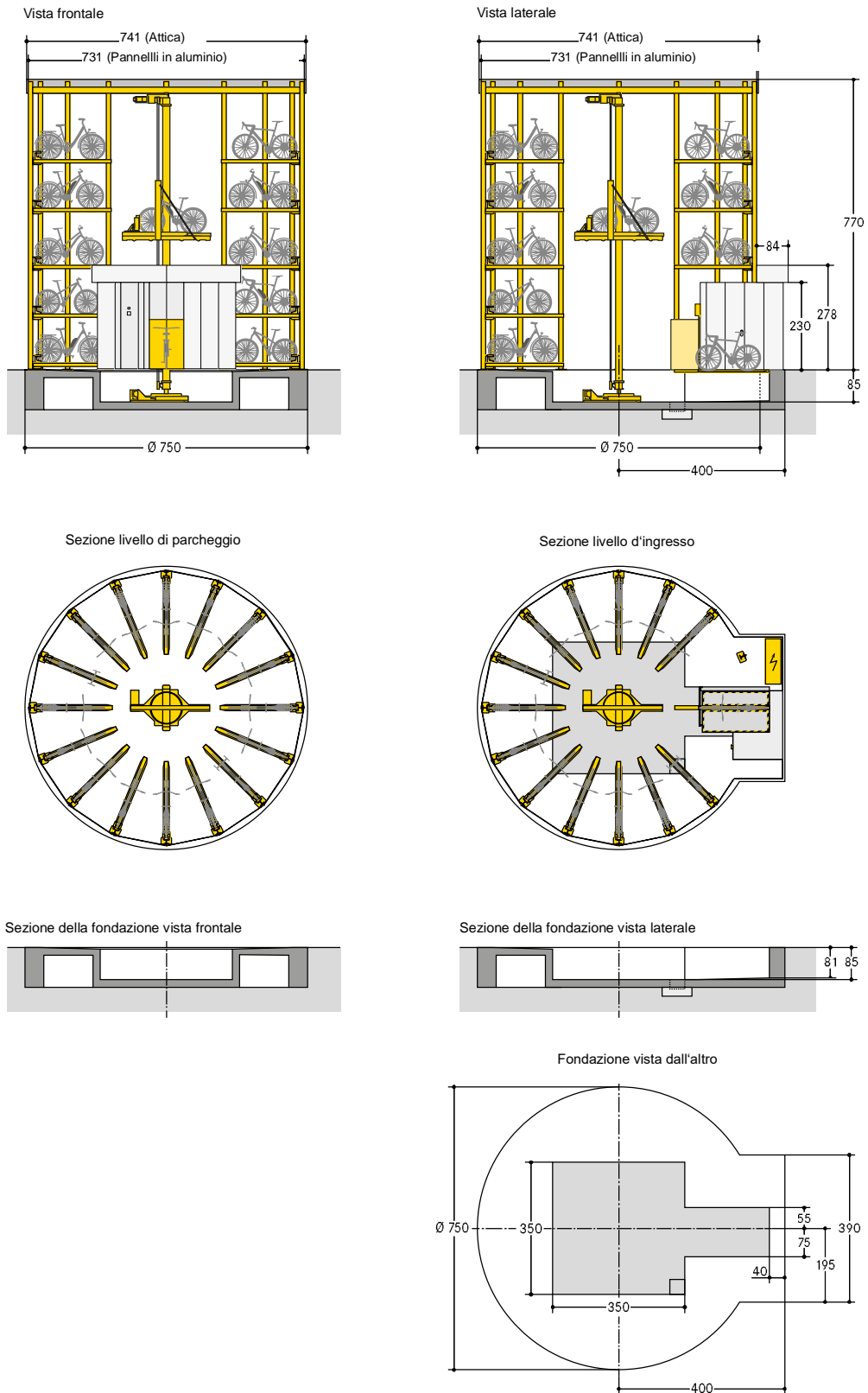
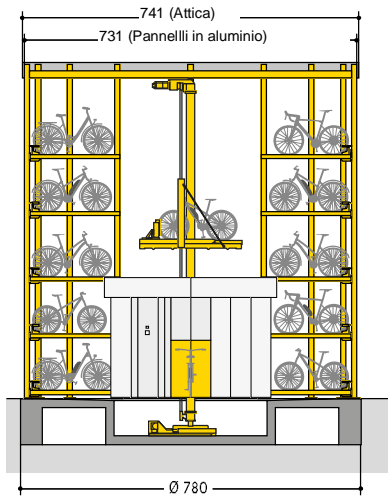


■ WÖHR Bikesafe 885/16 (74 posti), larghezza del manubrio 76 cm

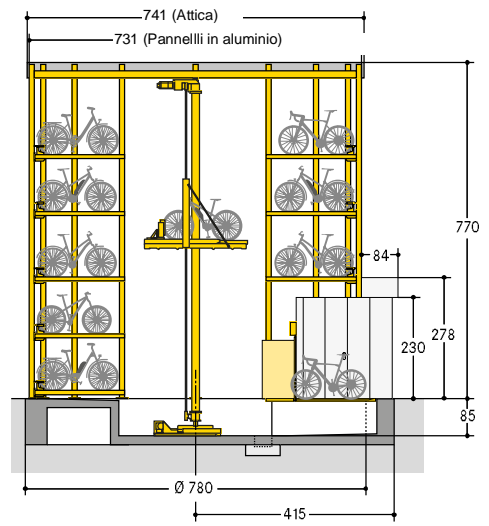


■ WÖHR Bikesafe 885/16 (74 posti), larghezza del manubrio 83 cm

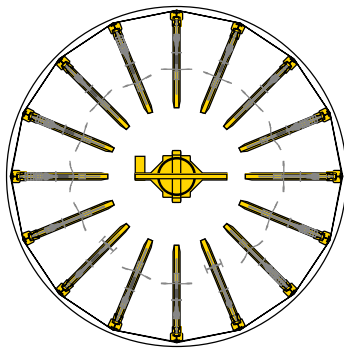
Vista frontale



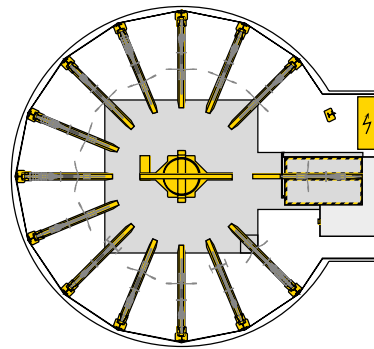
Vista laterale



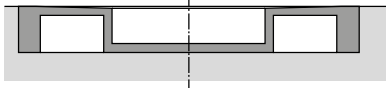
Sezione livello di parcheggio



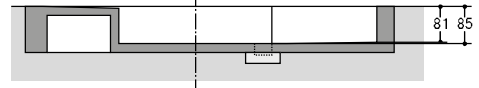
Sezione livello d'ingresso



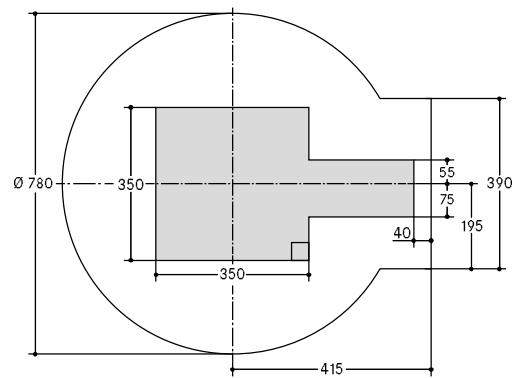
Sezione della fondazione vista frontale



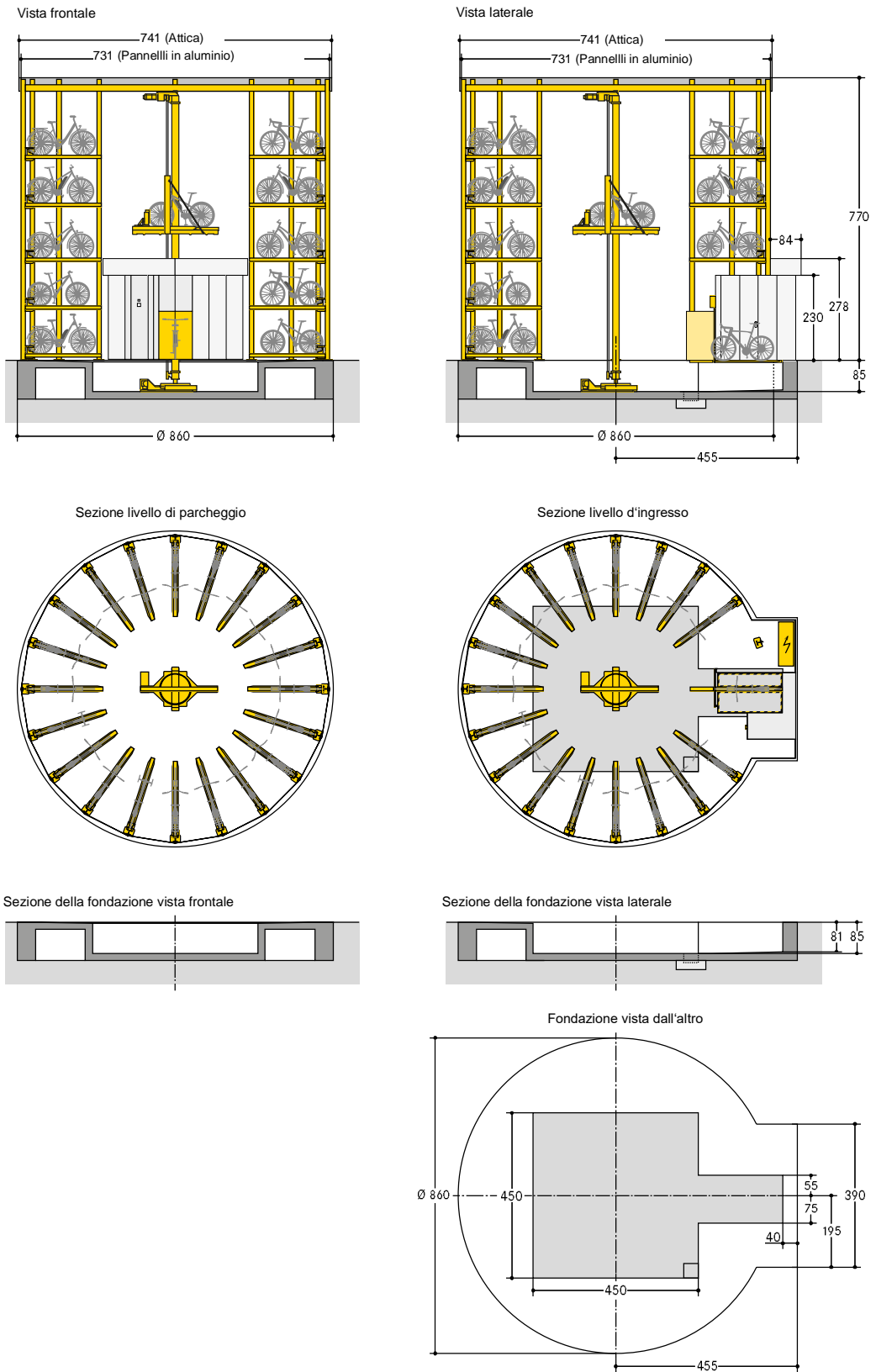
Sezione della fondazione vista laterale



Fondazione vista dall'altro

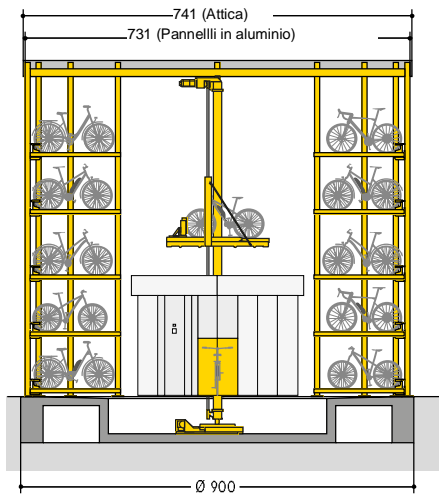


■ WÖHR Bikesafe 885/20 (94 posti), larghezza del manubrio 76 cm

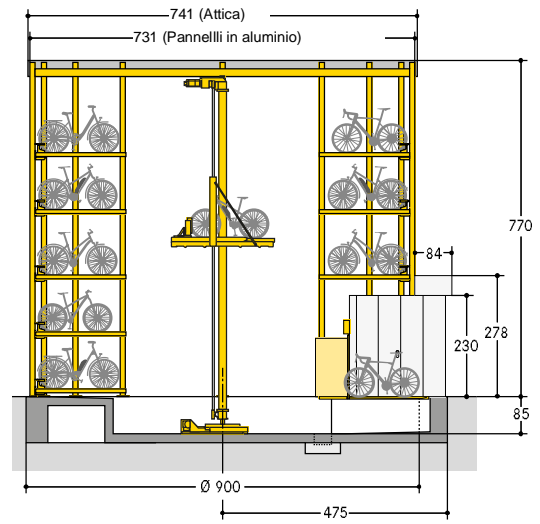


■ WÖHR Bikesafe 885/20 (94 posti), larghezza del manubrio 83 cm

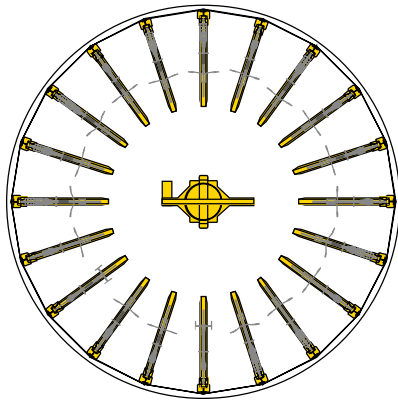
Vista frontale



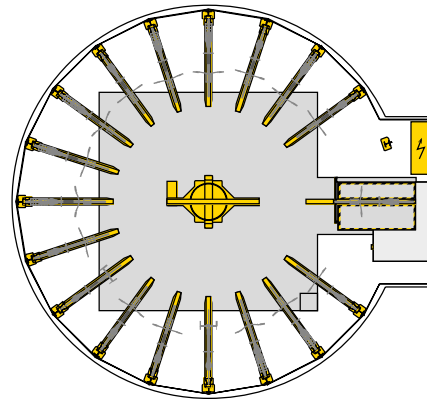
Vista laterale



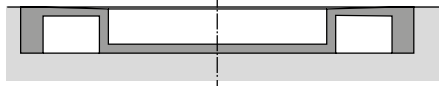
Sezione livello di parcheggio



Sezione livello d'ingresso



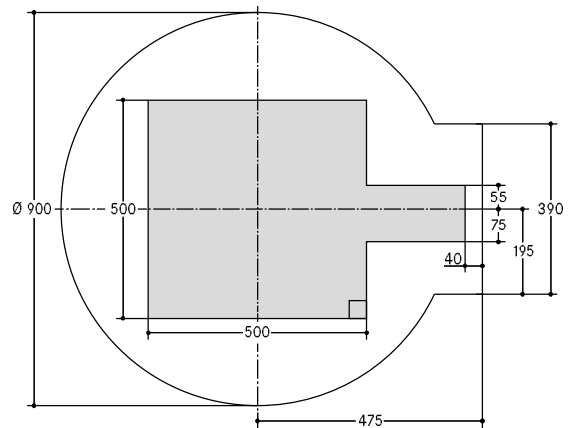
Sezione della fondazione vista frontale



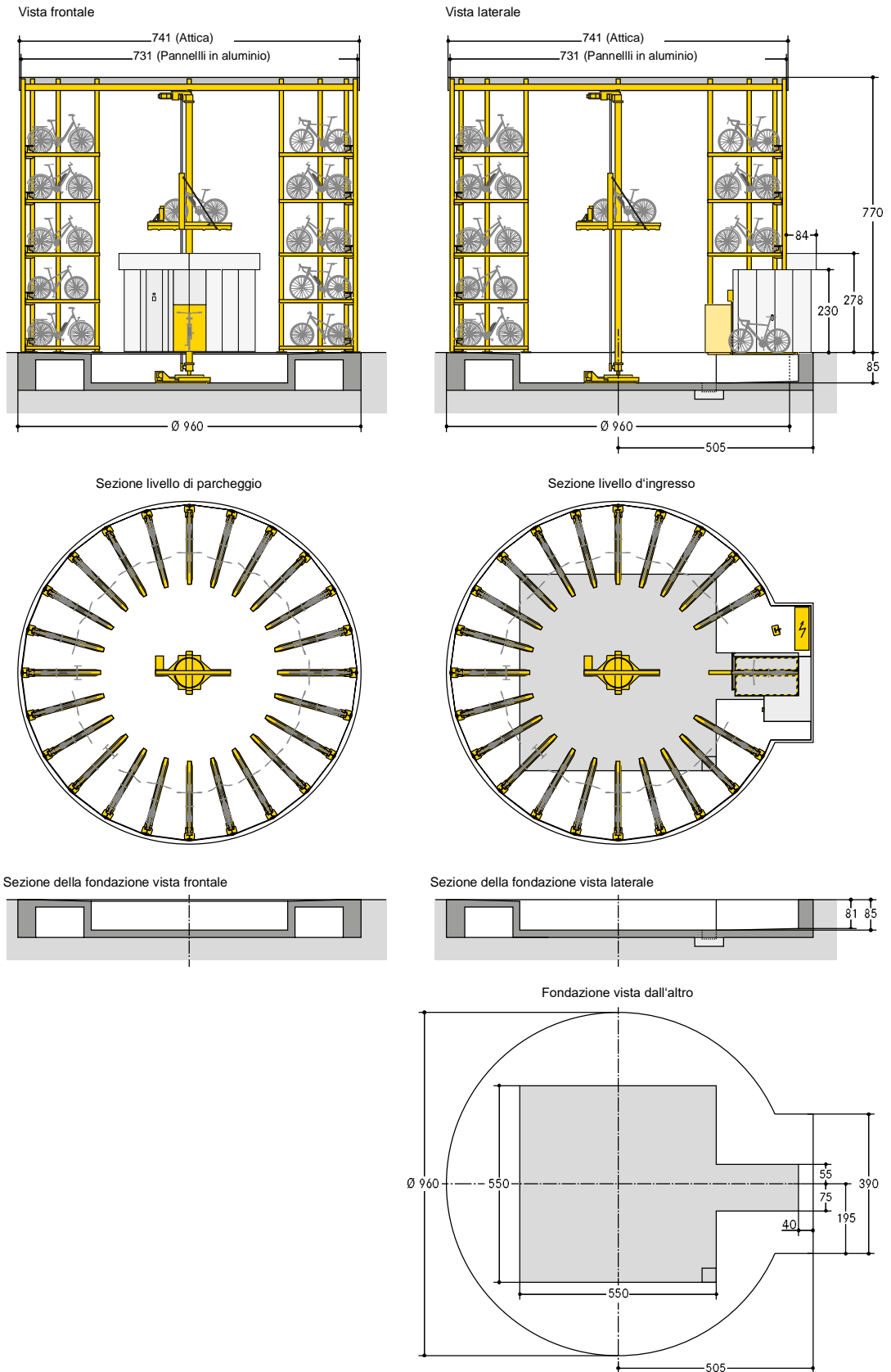
Sezione della fondazione vista laterale



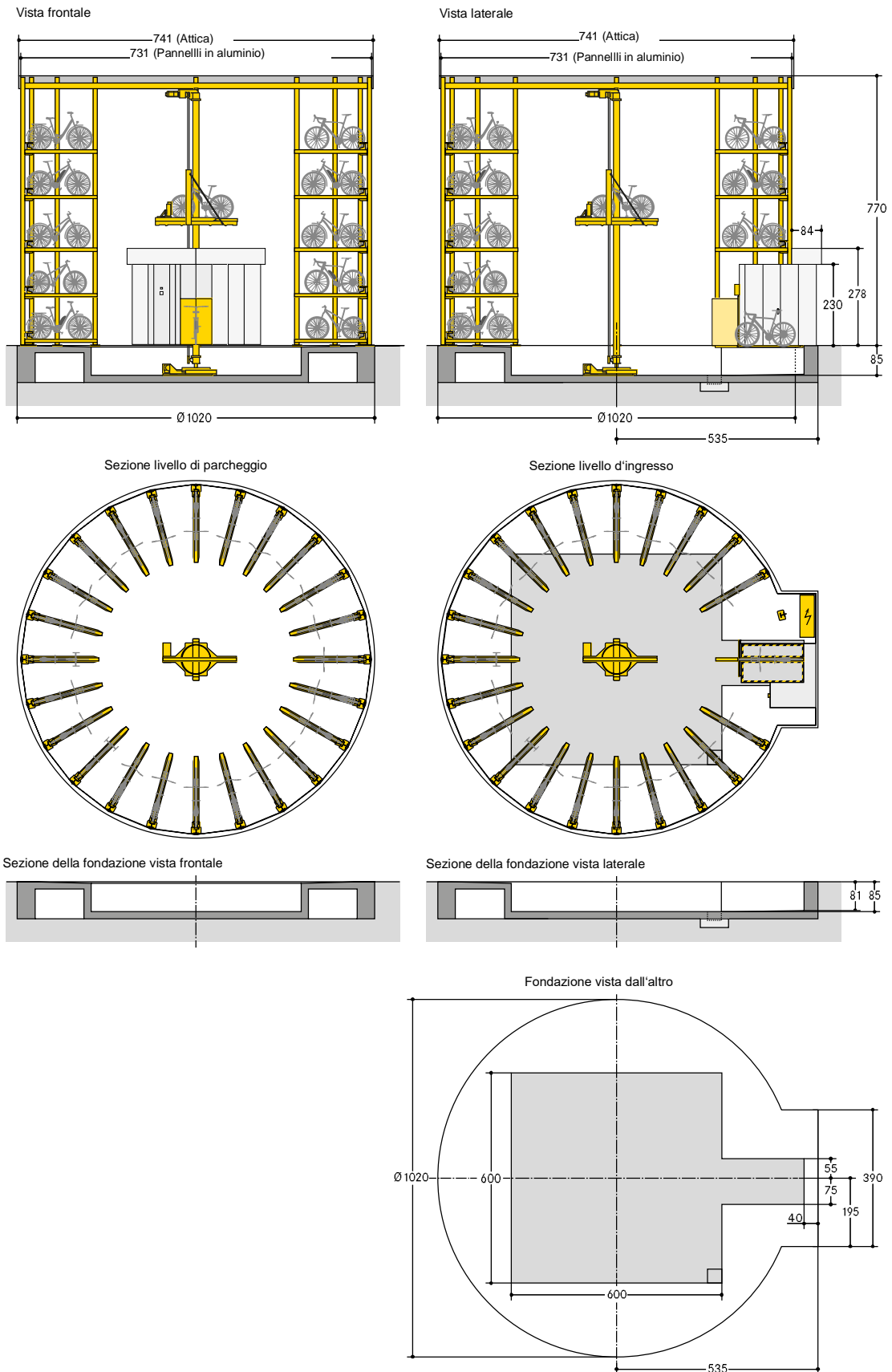
Fondazione vista dall'altro



■ WÖHR Bikesafe 885/24 (114 posti), larghezza del manubrio 76 cm



■ WÖHR Bikesafe 885/24 (114 posti), larghezza del manubrio 83 cm



■ **Dimensioni**

- Tutte le dimensioni sono dimensioni minime finite
- Inoltre devono essere prese in considerazione anche le tolleranze secondo VOB Parte C (DIN 18330, 18331) e DIN 18202.
- Tutte le dimensioni sono in cm